

COLEÇÃO
CORPORATE

COLLECTION
CORPORATE

COLLECTION
CORPORATE

Ocean N

TECIDO
PARA CONTRACT

FABRIC FOR
THE CONTRACT MARKET

TISSU
POUR COLLECTIVITÉS



Residencial
Home
Residentiel



Hotelaria
Hotel
Hospitalité



Escritórios
Office
Bureau



Restauração
Restaurant
Restaurant

TECIDO INTELIGENTE
INTELLIGENT FABRIC
TISSU INTELLIGENT

carlos natal.
feeling beyond quality

Composição | Composition | Composition 100% PES

Peso | Weight | Poids 470 g/ml ± 5%

Largura | Width | Laize 140 cm ± 2 cm

Comprimento das peças | Roll length | Longueur des pièces 50 m



carlos natal.
feeling beyond quality



Poderão existir pequenas variações de cores entre os diferentes lotes.
Batch to batch variations may occur within commercial tolerances.
Des variations tolérables de coloris d'un bain à outre peuvent se manifester.



Transpirável
Perspirant
Transpirable



Reciclável
Recyclable
Recyclable



Conforto e leveza
Comfort and lightness
Confort et légèreté



Longevidade
Long lasting
Longévité



Classe ignífuga EN 1021-1:2006 (Cigarro | Cigarette | Cigarette)
Flammability BS 5852:2006 CRIB 0
Classement de feu



Abrasão Martindale ISO 12947-2 (12kPa)
Martindale abrasion N° de ciclos: 150.000
Abrasion martindale



Resistência da cor à luz UNE EN ISO 105-B02:2001 PART 2: ≥ 5
Colour fastness to light
Tenue à la lumière



Resistência ao borboto ISO 12945-2: 5
Pilling
Pilling



SVHC 155 químicos
SVHC 155 chemicals
SVHC 155 chimiques



Ausência de Azo-Compostos, Ftalatos e DMF
Absence of azo compounds, phthalates and DMF
Absence de composés azoïques, les phthalates et le DMF

LIMPEZA | CLEANING | NETTOYAGE

Uma limpeza regular é fundamental para preservar a aparência dos tecidos e prolongar a sua vida útil.
Limpeza normal: aspirar regularmente com força média, de preferência semanalmente. Para remover manchas não gordurosas limpar com um pano sem pêlos ou uma esponja humedecidos com água morna.
Atenção: não esfregar fortemente os tecidos para evitar a perda de cores.

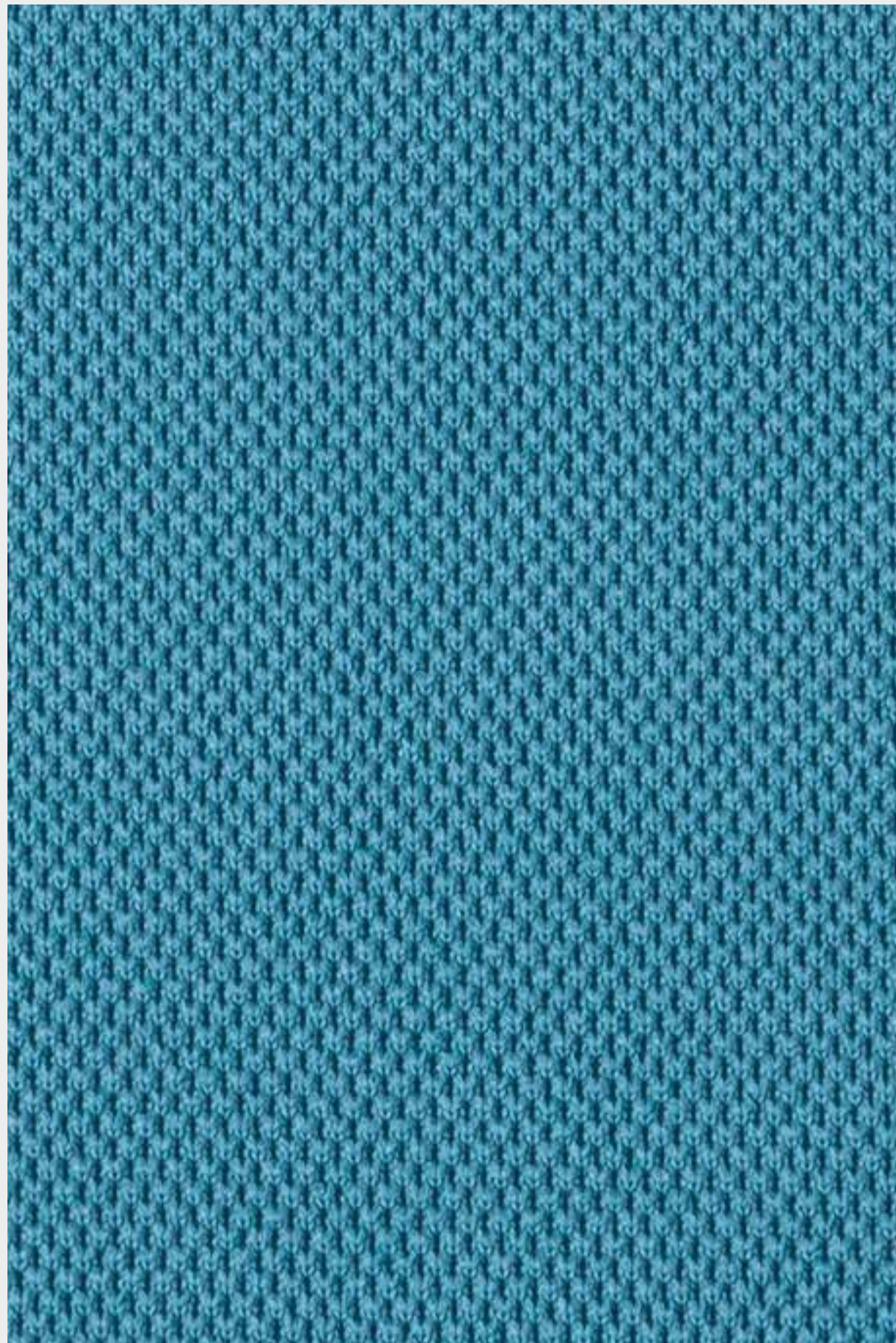
Regular cleaning is important in order to keep the upholstery looking its best and to prolong its life.
Normal cleaning: vacuum frequently on medium power, ideally every week. Remove non-greasy stains by carefully dabbing with a lint-free cloth or sponge wrung out in clean warm water.
Be careful: do not rub the material too hard because this could result in loss of colour.

Un nettoyage régulier et important si l'on souhaite préserver l'apparence du tissu d'ameublement et allonger sa durée de vie.
Nettoyage ordinaire: nettoyer régulièrement à l'aspirateur (éventuellement à puissance réduite), de préférence une fois par semaine. Pour enlever une tache non grasse, tremper dans de l'eau chaude un chiffon propre non pelucheux, ou une éponge, essorer et frotter doucement.
Attention: ne pas frotter trop fort le tissu, cela pourrait occasionner un blanchiment.

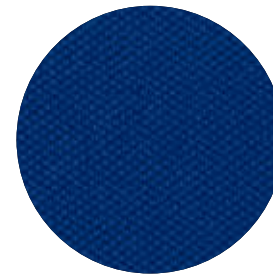
Carlos Natal, lda | Parque Empresarial do Casarão - Avenida das Ferragens, 87
3750-860 Águeda | Portugal
+351 234 622 114 | comercial@carlosnatal.pt | www.carlosnatal.pt

Ocean N

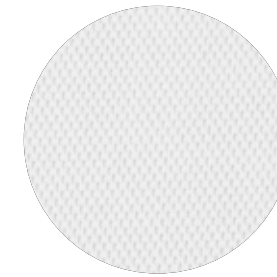
Tecido
Fabric | Tissu



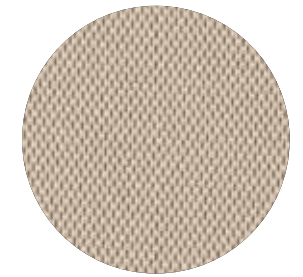
CÉU 01094010



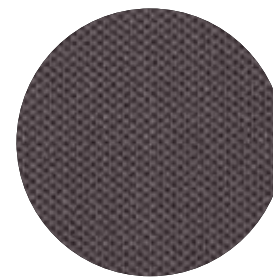
AZULÃO
01094005



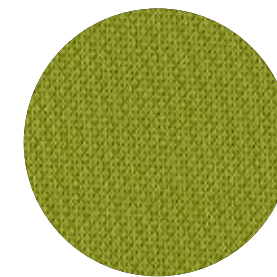
BRANCO
01094004



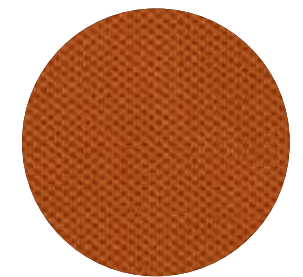
BEGE
01094002



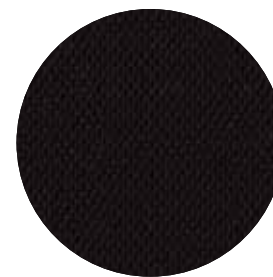
CINZA
01094003



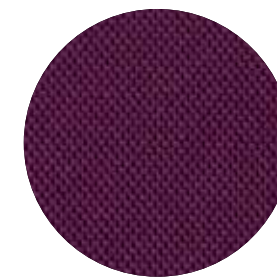
MENTA
01094006



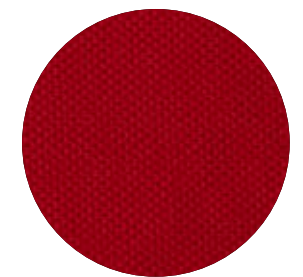
LARANJA
01094009



NEGRO
01094008



LILÁS
01094007



VERMELHO
01094001